

### PUN Index GME

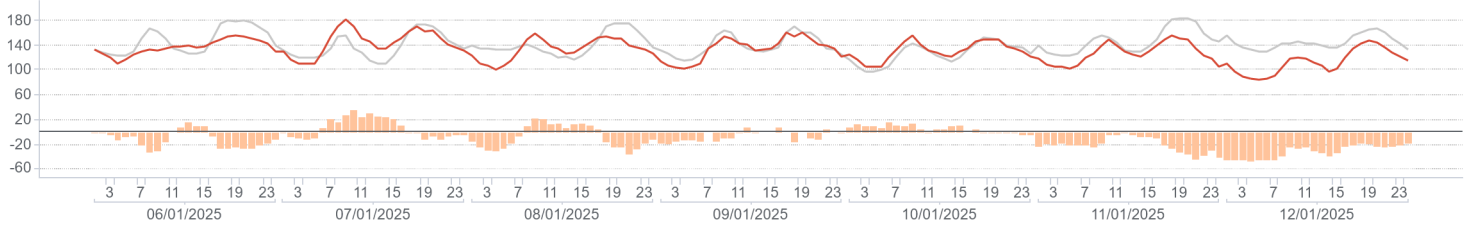
	Average (€/MWh)	Change (€/MWh)	Change (%)
<b>Baseload</b>	131,11	-9,28	-6,6%
<i>Peak</i>	145,80	4,95	3,5%
<i>Off-peak</i>	125,24	-14,97	-10,7%
Hourly maximum	181,27		
Hourly minimum	85,00		

### Volumes

	MWh	Average (MWh)	Change (%)	
<b>Total supply</b>	National	9.330.547	55.539	5,2%
	Foreign	1.405.591	8.367	23,1%
	<b>Total</b>	<b>10.736.139</b>	<b>63.906</b>	<b>7,2%</b>
<b>Sales</b>	National	4.082.730	24.302	12,7%
	Foreign	1.378.347	8.204	22,8%
	<b>Total</b>	<b>5.461.077</b>	<b>32.506</b>	<b>15,1%</b>
<b>Purchases</b>	National	5.359.540	31.902	17,6%
	Foreign	101.537	604	-46,0%
	<b>Total</b>	<b>5.461.077</b>	<b>32.506</b>	<b>15,1%</b>

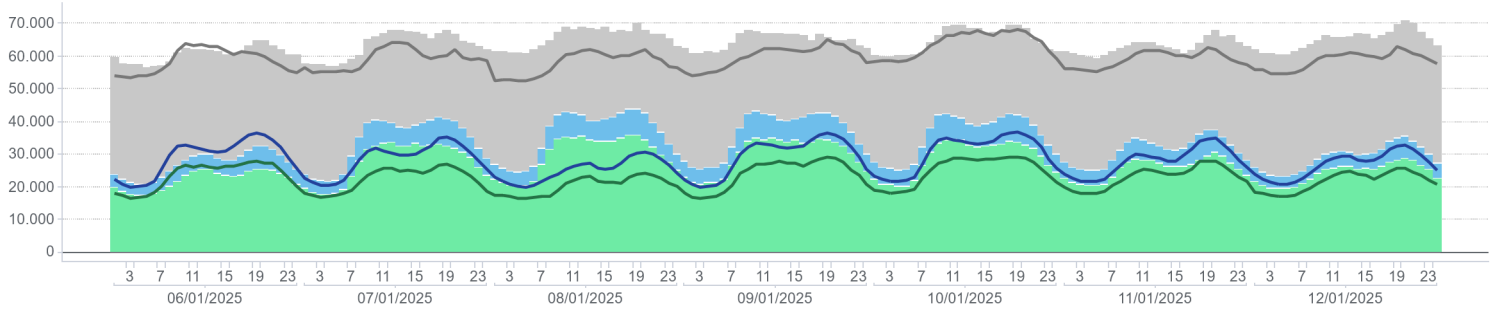
### PUN Index GME (€/MWh)

Hourly price / previous week / Price delta



### Volumes Supplied, Sold and Purchased (MWh)

Volume unsold / Off-IPEX Sales / On-IPEX Sales / On-IPEX Sales - prev. week / Off-IPEX Sales - prev. week / Volume unsold prev. week



### Electricity Supply

	MWh	Change (%)	Structure
<b>IPEX</b>	<b>4.484.216</b>	<b>16,4%</b>	<b>82,1%</b>
Market participants	2.802.682	15,5%	51,3%
GSE	317.336	3,8%	5,8%
Balance of PCE schedules	0	-100,0%	0,0%
<b>PCE (including MTE)</b>	<b>976.861</b>	<b>9,4%</b>	<b>17,9%</b>
Foreign zones	689.173	22,8%	12,6%
National zones	962.713	8,1%	17,6%
Balance of PCE schedules	0	-100,0%	0,0%
<b>VOLUMES SOLD</b>	<b>5.461.077</b>	<b>15,1%</b>	<b>100,0%</b>
<b>VOLUMES UNSOLD</b>	<b>5.275.062</b>	<b>0,1%</b>	
<b>TOTAL SUPPLY</b>	<b>10.736.139</b>	<b>7,2%</b>	

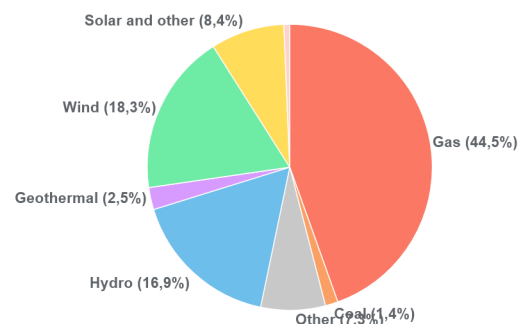
### Electricity Demand

	MWh	Change (%)	Structure
<b>IPEX</b>	<b>4.484.216</b>	<b>16,4%</b>	<b>82,1%</b>
Acquirente Unico	133.761	-12,2%	2,4%
Other market participants	3.652.870	20,4%	66,9%
Pumped-storage plants	18.125	0,4%	0,3%
Foreign zones	101.537	-46,0%	1,9%
Balance of PCE schedules	577.922	25,9%	10,6%
<b>PCE (including MTE)</b>	<b>976.861</b>	<b>9,4%</b>	<b>17,9%</b>
Acquirente Unico - National zones	2.400		0,0%
Other participants - National zones	1.552.383	14,8%	28,4%
Balance of PCE schedules	-577.922	25,9%	-10,6%
<b>VOLUMES PURCHASED</b>	<b>5.461.077</b>	<b>15,1%</b>	<b>100,0%</b>
<b>VOLUMES UNPURCHASED</b>	<b>234.331</b>	<b>-8,3%</b>	
<b>TOTAL DEMAND</b>	<b>5.695.408</b>	<b>13,9%</b>	

### Volumes Sold by Source

	Total (MWh)	Average (MWh)	Change (MWh)	Change (%)
<b>Conventional</b>	<b>2.175.540</b>	<b>12.950</b>	<b>-706</b>	<b>-5,2%</b>
Gas	1.817.902	10.821	-721	-6,2%
Coal	58.694	349	-37	-9,6%
Other	298.944	1.779	52	3,0%
<b>Renewable</b>	<b>1.880.135</b>	<b>11.191</b>	<b>3.408</b>	<b>43,8%</b>
Hydro	691.509	4.116	665	19,3%
Geothermal	101.940	607	-5	-0,8%
Wind	745.587	4.438	2.720	158,3%
Solar and other	341.099	2.030	28	1,4%
<b>Pumped storage</b>	<b>27.055</b>	<b>161</b>	<b>42</b>	<b>34,7%</b>
<b>Total</b>	<b>4.082.730</b>	<b>24.302</b>	<b>2.743</b>	<b>12,7%</b>

### Volumes Sold by Source



## Zonal selling price

	Northern IT		Central-northern IT		Central-southern IT		Southern IT		Calabria		Sicilia		Sardegna	
	€/MWh	Var	€/MWh	Var	€/MWh	Var	€/MWh	Var	€/MWh	Var	€/MWh	Var	€/MWh	Var
<b>Baseload</b>	131,21	-6,2%	131,25	-6,9%	131,03	-7,1%	131,02	-7,1%	131,12	-7,0%	131,18	-7,0%	129,27	-7,7%
<i>Peak</i>	146,06	4,1%	146,06	3,2%	145,26	2,6%	145,23	2,6%	145,23	2,6%	145,23	2,6%	145,26	4,9%
<i>Off-peak</i>	125,27	-10,3%	125,33	-11,0%	125,33	-11,0%	125,33	-11,0%	125,48	-10,8%	125,56	-10,8%	122,87	-12,7%
<b>Hourly maximum</b>	181,27		181,27		181,27		181,27		181,27		181,27		181,27	
<b>Hourly minimum</b>	85,00		85,00		85,00		85,00		85,00		85,00		85,00	0,00

## Zonal volumes

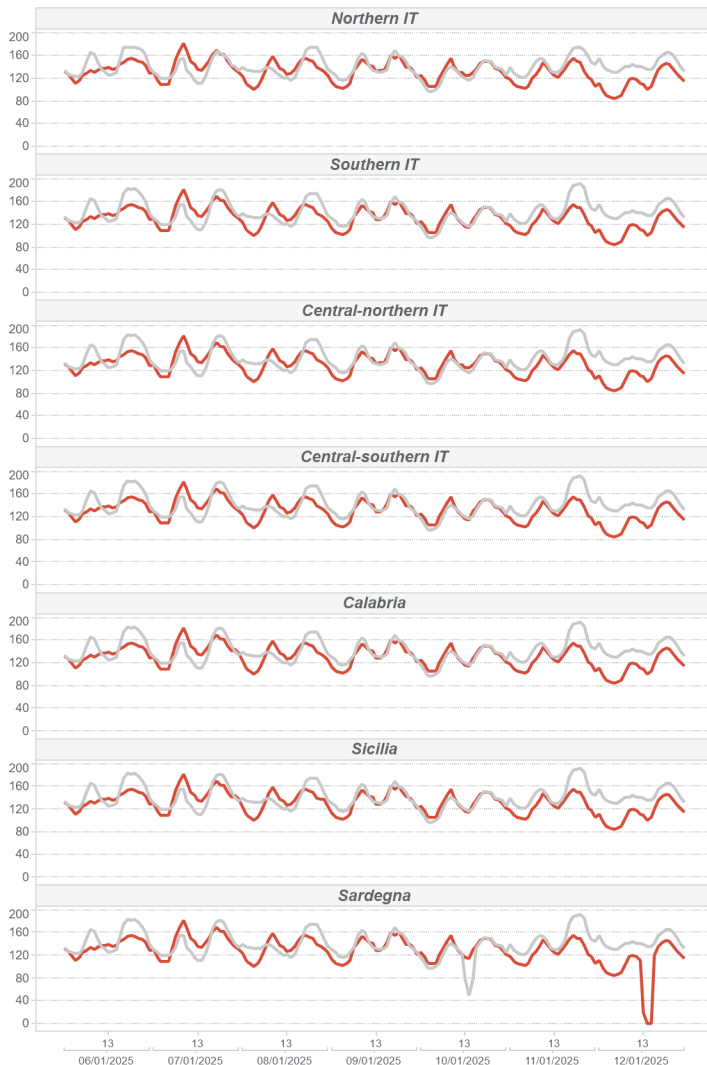
		Northern IT		Central-northern IT		Central-southern IT		Southern IT		Calabria		Sicilia		Sardegna	
		MWh	Var	MWh	Var	MWh	Var	MWh	Var	MWh	Var	MWh	Var	MWh	Var
<b>Total supply</b>	<i>Total</i>	4.732.918	-11,673	381.325	31.539	1.444.940	153.275	1.218.512	115.396	585.728	25.764	608.185	86.258	358.940	58.939
<b>Sales</b>	<i>Total</i>	1.978.346	107.549	292.267	-632	552.212	91.420	582.317	105.525	170.030	49.848	252.575	74.687	254.983	32.437
<b>Purchase</b>	<i>Total</i>	3.044.784	664.460	457.516	48.211	966.948	70.471	320.456	12.616	106.254	-1.021	308.360	4.150	155.222	4.201
<b>Total supply</b>	<i>Average</i>	28.172	-0,25%	2.270	9,02%	8.601	11,87%	7.253	10,46%	3.486	4,60%	3.620	16,53%	2.137	19,65%
<b>Sales</b>	<i>Average</i>	11.776	5,75%	1.740	-0,22%	3.287	19,84%	3.466	22,13%	1.012	41,48%	1.503	41,99%	1.518	14,58%
<b>Purchase</b>	<i>Average</i>	18.124	27,91%	2.723	11,78%	5.756	7,86%	1.907	4,10%	632	-0,95%	1.835	1,36%	924	2,78%

## Volumes sold by Source. Hourly Average

		Northern IT		Central-northern IT		Central-southern IT		Southern IT		Calabria		Sicilia		Sardegna	
		MWh	Var	MWh	Var	MWh	Var	MWh	Var	MWh	Var	MWh	Var	MWh	Var
<b>Conventional</b>		<b>7.705</b>	<b>0,8%</b>	<b>692</b>	<b>-14,8%</b>	<b>1.409</b>	<b>-7,8%</b>	<b>1.204</b>	<b>-22,4%</b>	<b>531</b>	<b>11,3%</b>	<b>450</b>	<b>-27,3%</b>	<b>960</b>	<b>-6,3%</b>
<i>Gas</i>		6.682	0,8%	630	-16,6%	1.176	-11,9%	972	-26,5%	427	17,0%	419	-28,5%	514	-6,0%
<i>Coal</i>		-	-	-	-	-	-	-	-	-	-	-	-	349	-9,6%
<i>Other</i>		1.023	1,0%	62	8,9%	233	19,7%	231	1,3%	104	-7,4%	30	-4,9%	96	5,8%
<b>Renewable</b>		<b>3.921</b>	<b>15,6%</b>	<b>1.048</b>	<b>12,5%</b>	<b>1.867</b>	<b>56,2%</b>	<b>2.262</b>	<b>75,8%</b>	<b>481</b>	<b>102,0%</b>	<b>1.054</b>	<b>139,3%</b>	<b>558</b>	<b>85,9%</b>
<i>Hydro</i>		2.746	19,7%	251	46,3%	531	14,5%	330	12,2%	64	11,0%	150	17,7%	44	2,5%
<i>Geothermal</i>		-	-	607	-0,8%	-	-	-	-	-	-	-	-	-	-
<i>Wind</i>		40	47,9%	61	171,2%	1.067	144,9%	1.735	119,0%	376	175,4%	738	415,3%	421	161,4%
<i>Solar and other</i>		1.135	6,0%	130	3,1%	269	-9,1%	197	-1,7%	41	-7,0%	166	-2,2%	93	-3,3%
<b>Pumped storage</b>		<b>150</b>	<b>49,1%</b>	<b>-</b>	<b>-</b>	<b>11</b>	<b>-43,2%</b>	<b>0</b>	<b>103,2%</b>	<b>-</b>	<b>-</b>	<b>-</b>	<b>-</b>	<b>0</b>	<b>47,9%</b>
<b>Total</b>		<b>11.776</b>	<b>5,7%</b>	<b>1.740</b>	<b>-0,2%</b>	<b>3.287</b>	<b>19,8%</b>	<b>3.466</b>	<b>22,1%</b>	<b>1.012</b>	<b>41,5%</b>	<b>1.503</b>	<b>42,0%</b>	<b>1.518</b>	<b>14,6%</b>

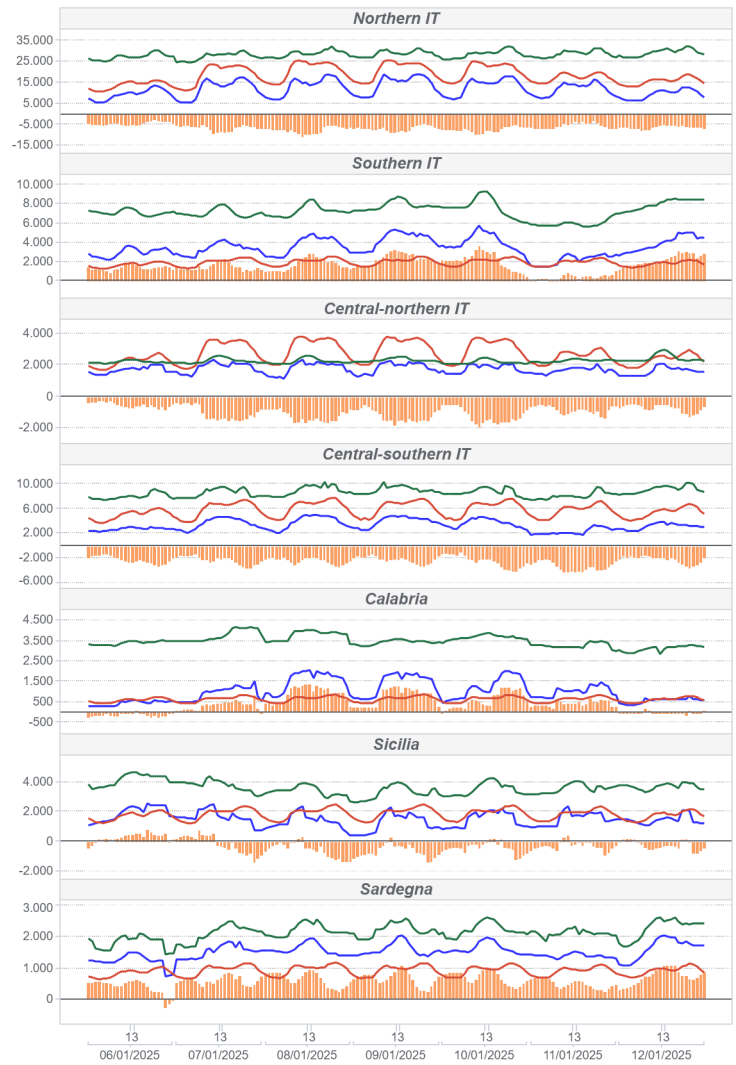
## Zonal Selling Price (€/MWh)

● Hourly price ● previous week



## Zonal Volumes (MWh)

■ Sales ■ Purchases ■ Offers ■ Flow

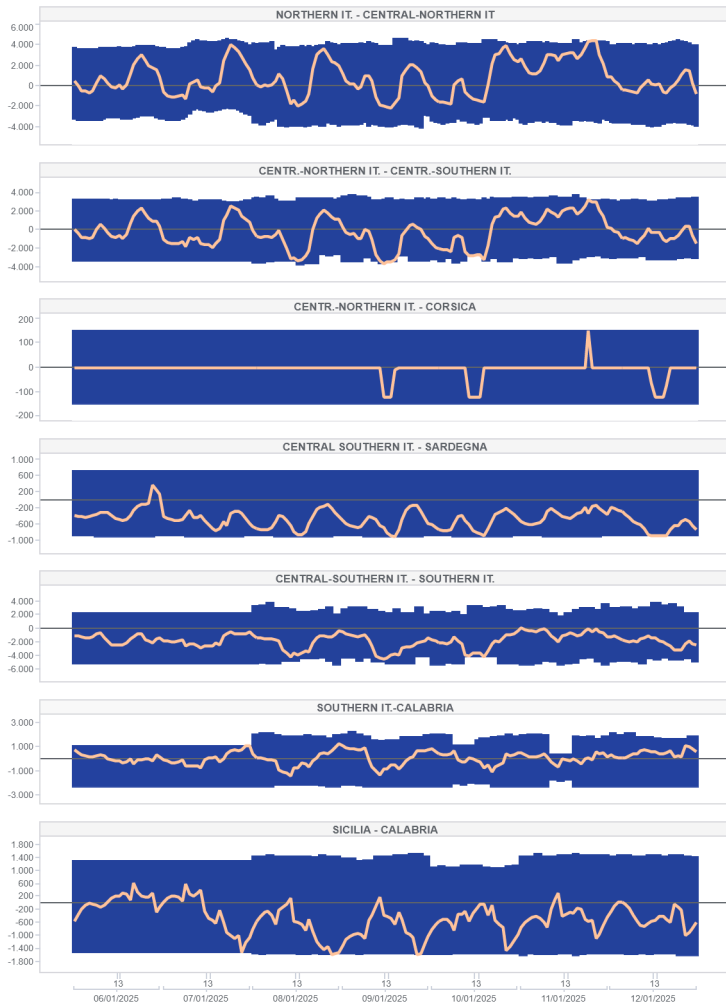


## Transmissions

		Direction frequency		Average Physical Transmission Rights Assigned		Average flow		Average use of Physical Transmission Rights Assigned	
		Sett. n.1	Sett. n.2	Sett. n.1	Sett. n.2	Sett. n.1	Sett. n.2	Sett. n.1	Sett. n.2
France - Northern It.	FRAN-NORD	0,0%	0,0%	0	0	0	0		
	NORD-FRAN			0	0	0	0		
	SVIZ-NORD	100,0%	100,0%	2.564	3.482	2.251	2.880	87,8%	82,7%
Switzerland - Northern It.	NORD-SVIZ			3.287	9.118	0	0	0,0%	0,0%
	AUST-NORD	0,0%	0,0%	0	0	0	0		
	NORD-AUST			0	0	0	0		
Austria - Northern It.	CSUD-MONT	18,5%	11,3%	695	669	318	109	8,4%	1,8%
	MONT-CSUD	81,5%	88,7%	628	600	367	481	47,7%	71,1%
	SLOV-NORD	0,0%	0,0%	0	0	0	0		
Slovenia - Northern It.	NORD-SLOV			0	0	0	0		
	GREC-SUD	0,0%	0,0%	25	25	0	0	0,0%	0,0%
	SUD-GREC			25	25	0	0	0,0%	0,0%
		Direction frequency		Average limit		Average flow		Saturation frequency	
		Sett. n.1	Sett. n.2	Sett. n.1	Sett. n.2	Sett. n.1	Sett. n.2	Sett. n.1	Sett. n.2
Centr.-Northern It. - Centr.-Southern It.	CNOR-CSUD	84,5%	41,7%	3.594	3.380	1.939	1.369	1,2%	0,6%
	CSUD-CNOR	15,5%	58,3%	3.408	3.286	993	1.349	0,0%	4,2%
	NORD-CNOR	95,2%	64,3%	4.034	4.096	2.322	1.678	9,5%	1,2%
Northern It. - Central-Northern It.	CNOR-NORD	4,8%	35,7%	3.740	3.436	736	893	0,0%	0,0%
	CNOR-CORS	1,2%	0,6%	150	150	103	150	0,6%	0,6%
	CORS-CNOR	4,2%	7,7%	150	150	72	104	0,0%	0,0%
Central-Northern It. - Corsica	CSUD-SARD	15,5%	1,8%	720	720	60	262	0,0%	0,0%
	SARD-CSUD	84,5%	98,2%	887	887	366	483	4,2%	3,6%
	CSUD-SUD	33,3%	0,6%	3.066	2.749	309	95	0,0%	0,0%
Centro Sud - Sardegna	SUD-CSUD	66,7%	99,4%	5.223	4.959	1.005	1.812	0,0%	0,6%
	CORS-SARD	1,2%	0,6%	150	150	73	120	0,0%	0,0%
	SARD-CORS	98,8%	99,4%	150	150	33	38	1,8%	6,0%
Centro Sud - Sud	SUD-CALA	97,6%	59,5%	1.861	1.607	791	442	0,0%	1,2%
	CALA-SUD	2,4%	40,5%	2.350	2.299	63	425	0,0%	0,0%
	SICI-CALA		17,9%	1.299	1.370	0	217	0,0%	0,0%
Corsica - Sardegna	CALA-SICI	100,0%	82,1%	1.559	1.572	847	620	0,6%	1,8%
	SICI-MALT	95,8%	100,0%	225	225	100	139	0,0%	1,8%
	MALT-SICI	0,0%	0,0%	225	225	0	0	0,0%	0,0%
Sardegna - Corsica AC	COAC-SARD	0,0%	0,0%	23	23	0	0		
	SARD-COAC	100,0%	100,0%	109	109	95	87	0,0%	0,0%
			Direction frequency		Average limit		Average flow		Saturation frequency
		Sett. n.1	Sett. n.2	Sett. n.1	Sett. n.2	Sett. n.1	Sett. n.2	Sett. n.1	Sett. n.2
Southern It.-Grecia Coupling	SUD-XGRE	16,1%	14,3%	500	500	349	320	7,1%	5,4%
	XGRE-SUD	83,9%	83,3%	500	500	462	455	71,4%	69,6%
	NORD-COUP			10.000	10.000	0	0	0,0%	0,0%
IT Coupling - Northern It.	COUP-NORD	100,0%	100,0%	10.000	10.000	2.959	4.227	0,0%	0,0%
	COUP-XAUS	61,9%	23,8%	139	140	140	141	58,3%	23,8%
	XAUS-COUP	36,3%	75,6%	338	348	275	331	26,8%	71,4%
Coupling - Austria Coupling	COUP-XFRA			2.087	2.158	0	0	0,0%	0,0%
	XFRA-COUP	100,0%	100,0%	3.936	3.904	3.474	3.759	17,9%	72,6%
	COUP-BSP	83,9%	26,2%	751	676	686	622	67,3%	22,6%
Coupling - Slovenia Coupling	BSP-COUP	13,1%	73,2%	458	603	363	567	10,1%	66,1%

## National transmissions (MWh)

Limite Import Limite Export Flusso



## Foreign transmissions (MWh)

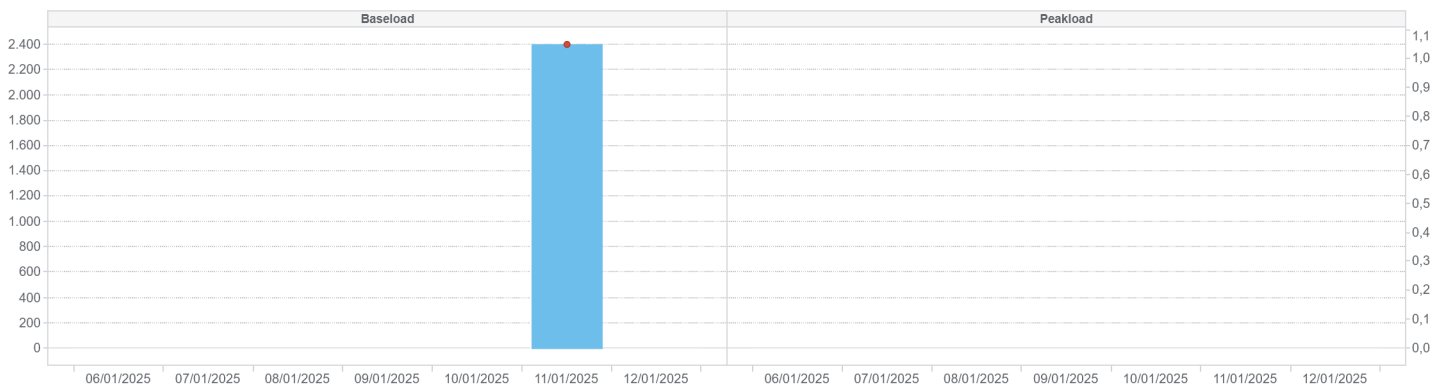
Import netto coup Import netto esplicita Limite Export Limite Import



## MPEG

Prodotti	Minimum price (cent. €/MWh)	Maximum price (cent. €/MWh)	Average price (cent. €/MWh)	Volumes (MW)	Volumes (MWh)	Open position (MW)	Open position (MWh)
07/01/2025							
08/01/2025							
<b>Baseload</b>							
09/01/2025							
10/01/2025							
11/01/2025	105,00	105,00	105,00	100	2.400	100	2.400
12/01/2025							
06/01/2025							
07/01/2025							
<b>Peakload</b>							
08/01/2025							
09/01/2025							
10/01/2025							
<b>TOTALE</b>	<b>105,00</b>	<b>105,00</b>	<b>105,00</b>	<b>100</b>	<b>2.400</b>	<b>100</b>	<b>2.400</b>

Bar chart showing Volumes (blue bars) and Average price (red line) for Baseload and Peakload periods.



## MTE

	Minimum price (€/MWh)	Maximum price (€/MWh)	Control price (€/MWh)	Control price (change)	Negoziations	Volumes (MW)	Volumes (MWh)	Volumes (MWh)	Volumes (change)	Open position (MW)	Open position (MWh)
<b>Baseload</b>											
BL-M-2025-02			126,3	0,0						12	8.064
BL-M-2025-03			126,4	0,0						12	8.916
BL-M-2025-04			125,7	0,0						0	0
BL-Q-2025-02			117,2	0,0						6	13.104
BL-Q-2025-03			125,4	0,0						6	13.248
BL-Q-2025-04			126,6	0,0						6	13.254
BL-Q-2026-01			119,2	0,0						0	0
BL-Y-2026			109,9	0,0						0	0
PL-M-2025-02			140,1	0,0						0	0
PL-M-2025-03			136,1	0,0						0	0
PL-M-2025-04			135,5	0,0						0	0
<b>Peakload</b>											
PL-Q-2025-02			117,4	0,0						0	0
PL-Q-2025-03			133,6	0,0						0	0
PL-Q-2025-04			128,7	0,0						0	0
PL-Q-2026-01			125,5	0,0						0	0
PL-Y-2026			115,7	0,0						0	0

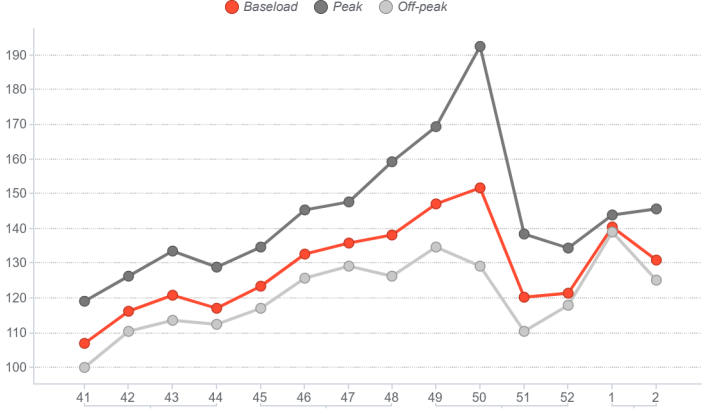
## PCE

	Registered transaction (MWh)	% change	Structure
Peak	2.370	-94,1%	0,1%
Off Peak	1.080	-98,7%	0,0%
Non Standard	3.463.540	10,3%	87,3%
Bilateral	3.962.179	4,7%	99,9%
MTE	2.520	6,1%	0,1%
MPEG	2.400	4900,0%	0,1%
<b>Total PCE</b>	<b>3.967.099</b>	<b>4,7%</b>	<b>100,0%</b>
<b>Net position</b>	<b>2.479.807</b>	<b>4,9%</b>	<b>62,5%</b>

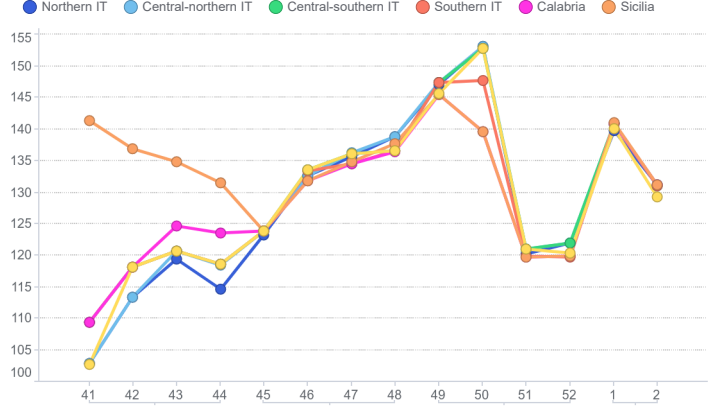
## Programs

Schedules	Injection (MWh)	Injection (change)	Withdrawal (MWh)	Withdrawal (change)
Requested	1.307.167	4,9%	1.554.953	15,0%
Rejected	330.306	-6,3%	169	-50,8%
<b>Registered</b>	<b>976.861</b>	<b>9,3%</b>	<b>1.554.783</b>	<b>15,0%</b>
Scheduled deviation	1.502.946	2,2%	925.024	-8,7%
<b>Balance of schedules</b>	<b>0</b>		<b>577.922</b>	

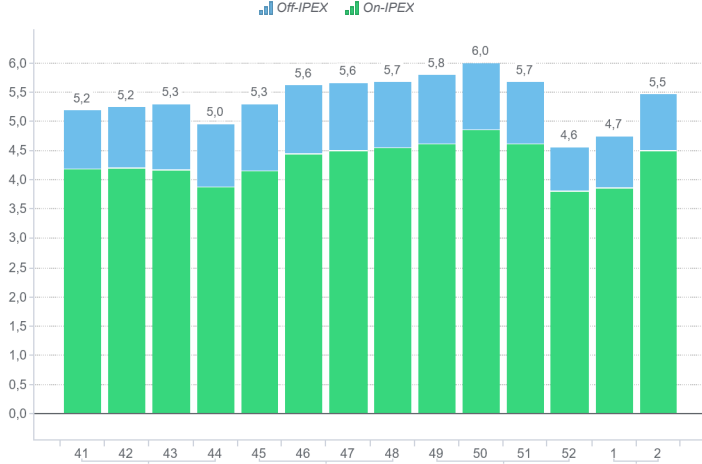
### MGP - PUN Index GME (€/MWh)



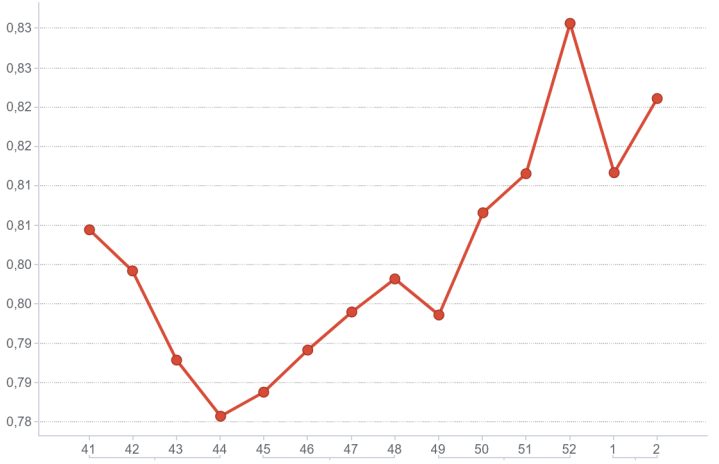
### MGP - Selling Price (€/MWh)



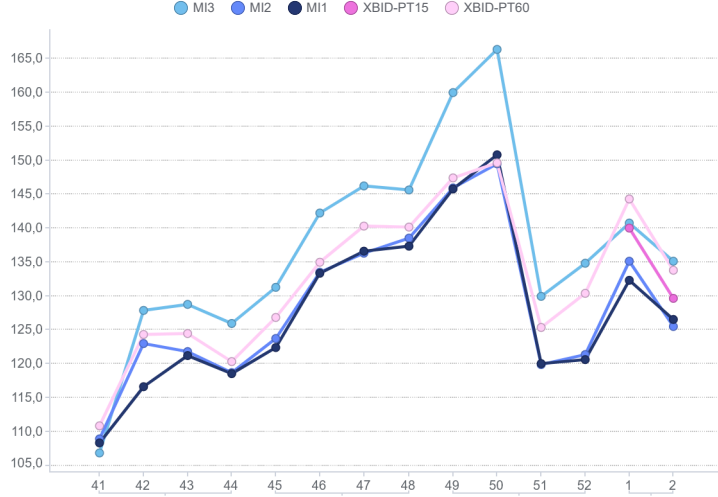
### MGP - Volumes (TWh)



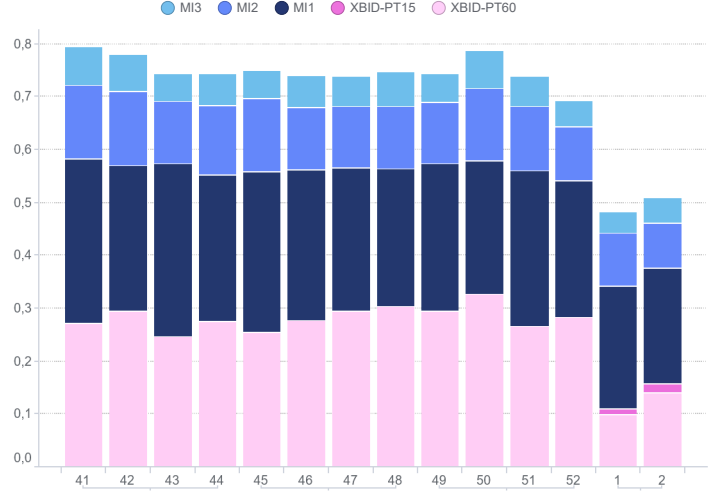
### MGP - Liquidity (%)



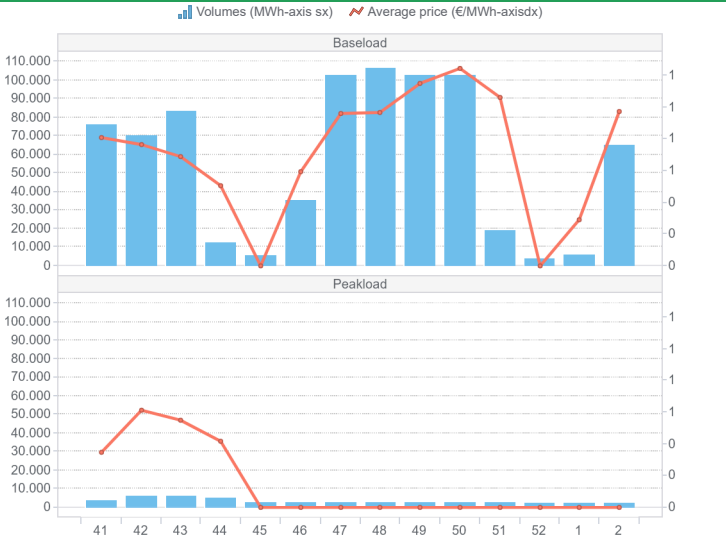
### Intra-Day Market (MI) - Prices (€/MWh)



### MI - Volumes (TWh)



### MPEG



### PCE

